

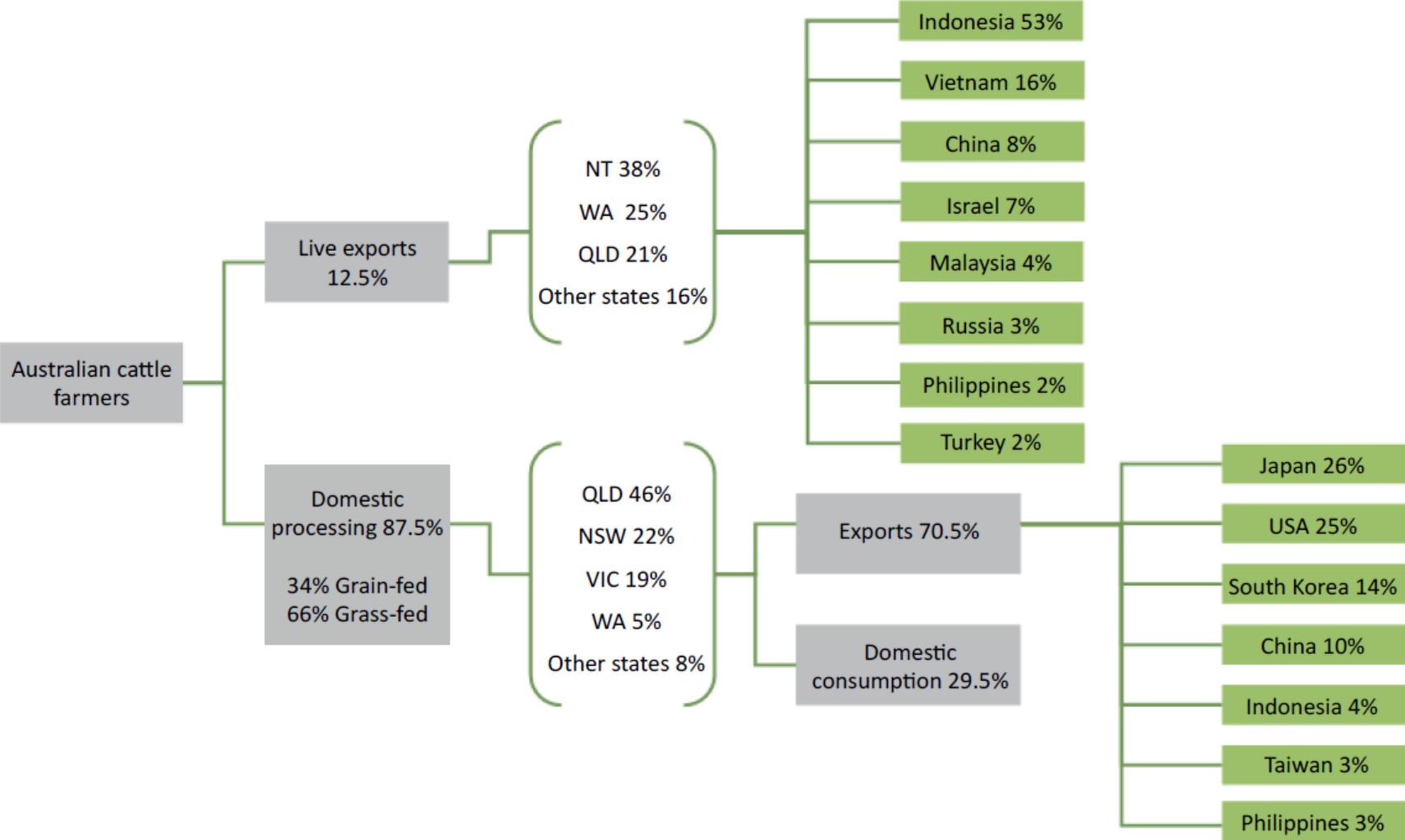


# **Economic Value of the Live Export Trade**

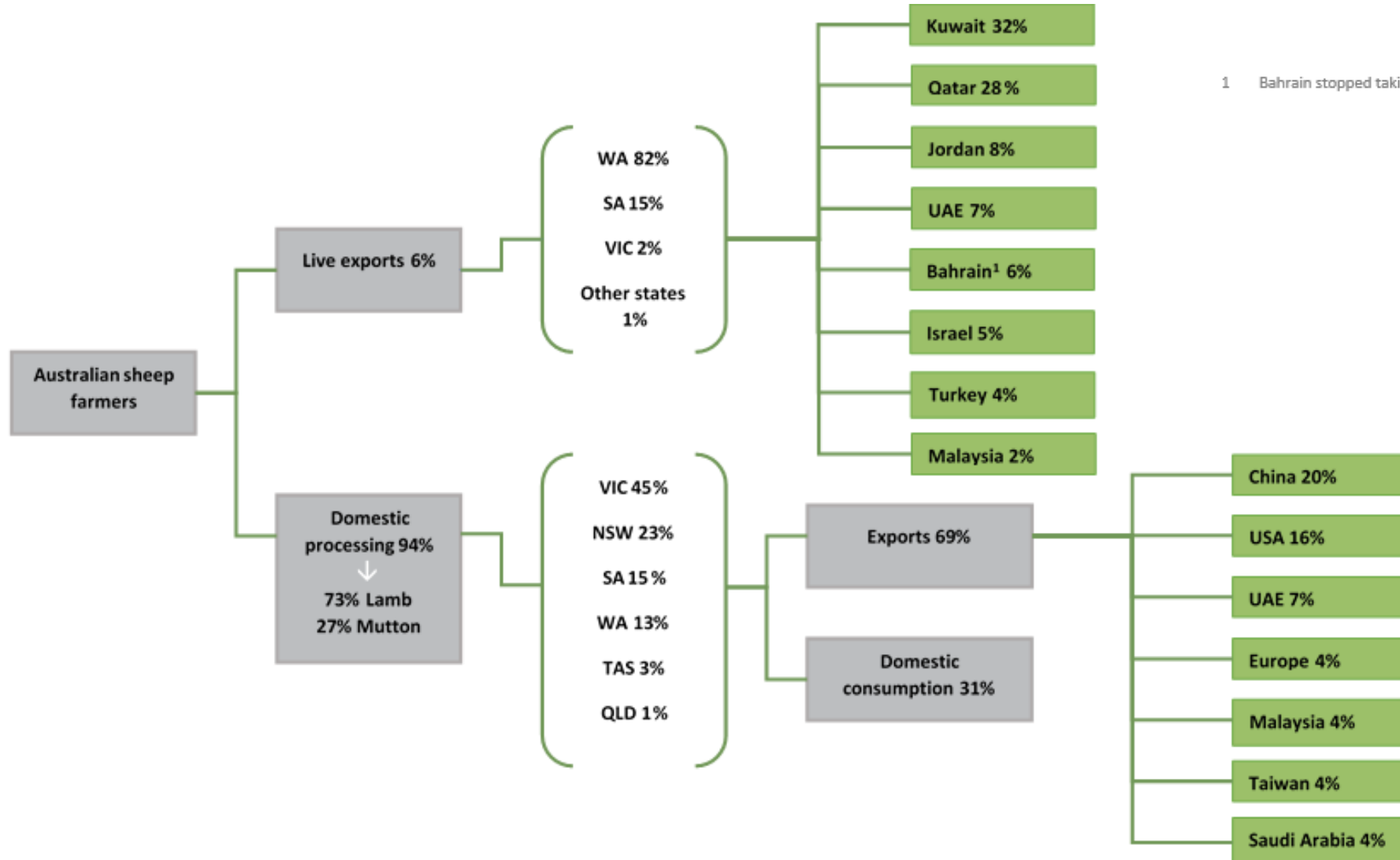
**Matt Dalglish**

**October 2019**

# Beef Industry Flow Diagram



# Sheep Industry Flow Diagram



1 Bahrain stopped taking live sheep from Australia in 2015

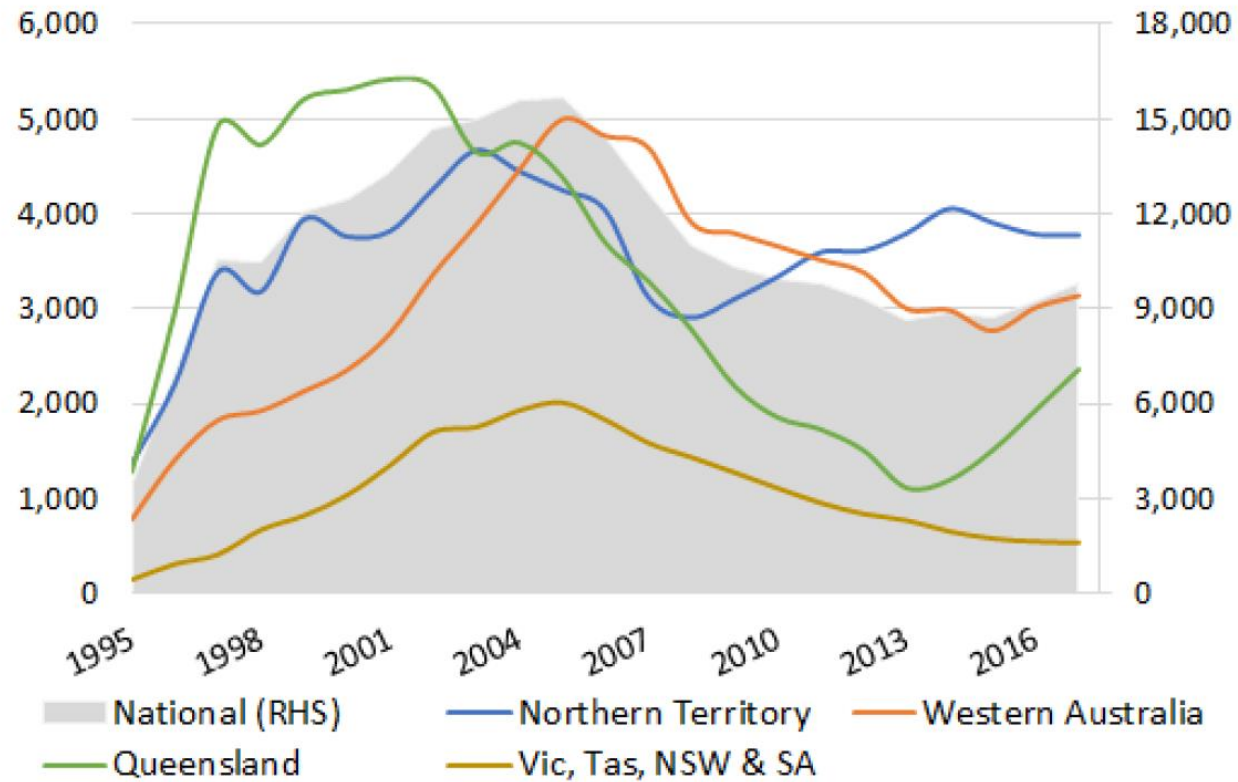
# Employment - Live Cattle

2,029

on farm workers

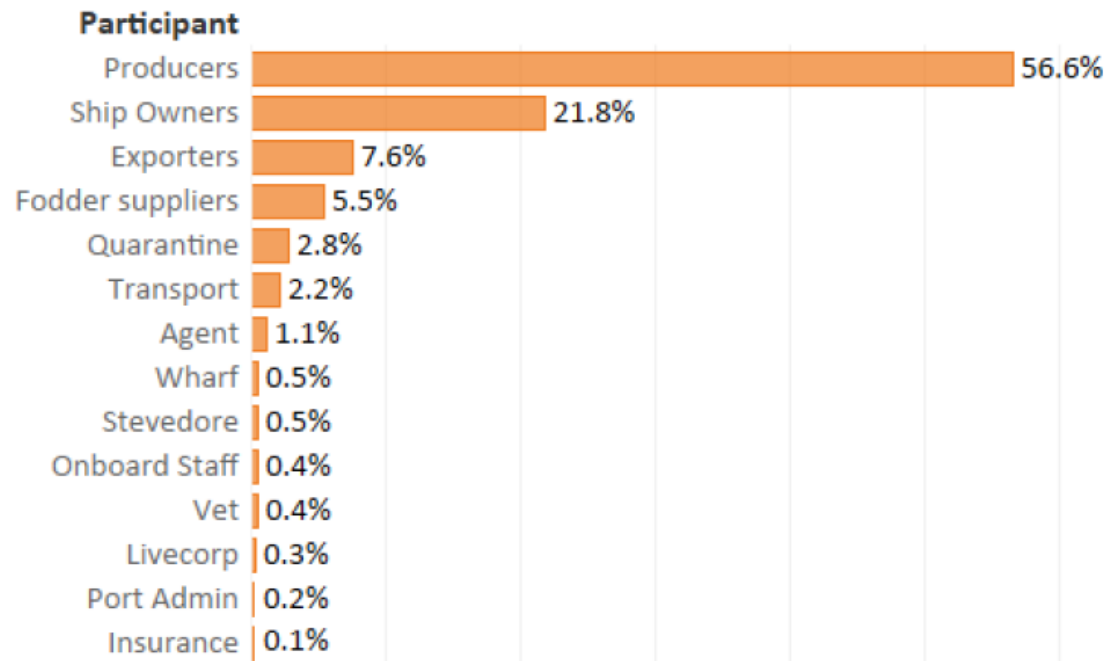
9,799

total employment

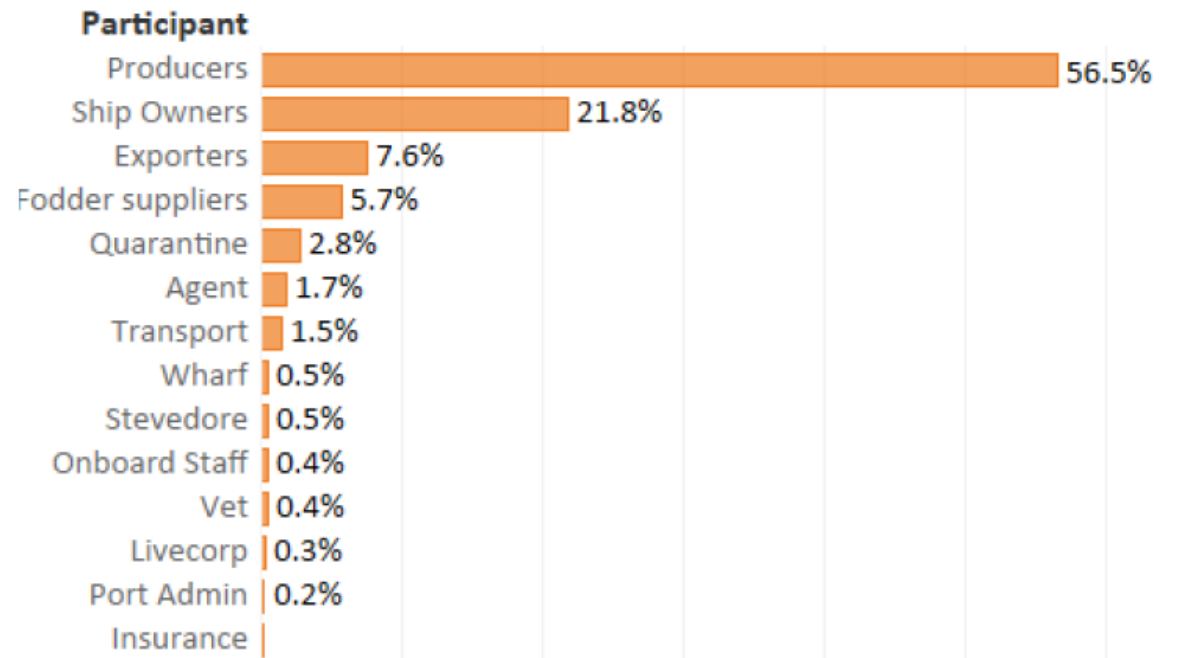


# Value Chain - Live Cattle

Northern Territory live export value chain participants by proportion of revenue

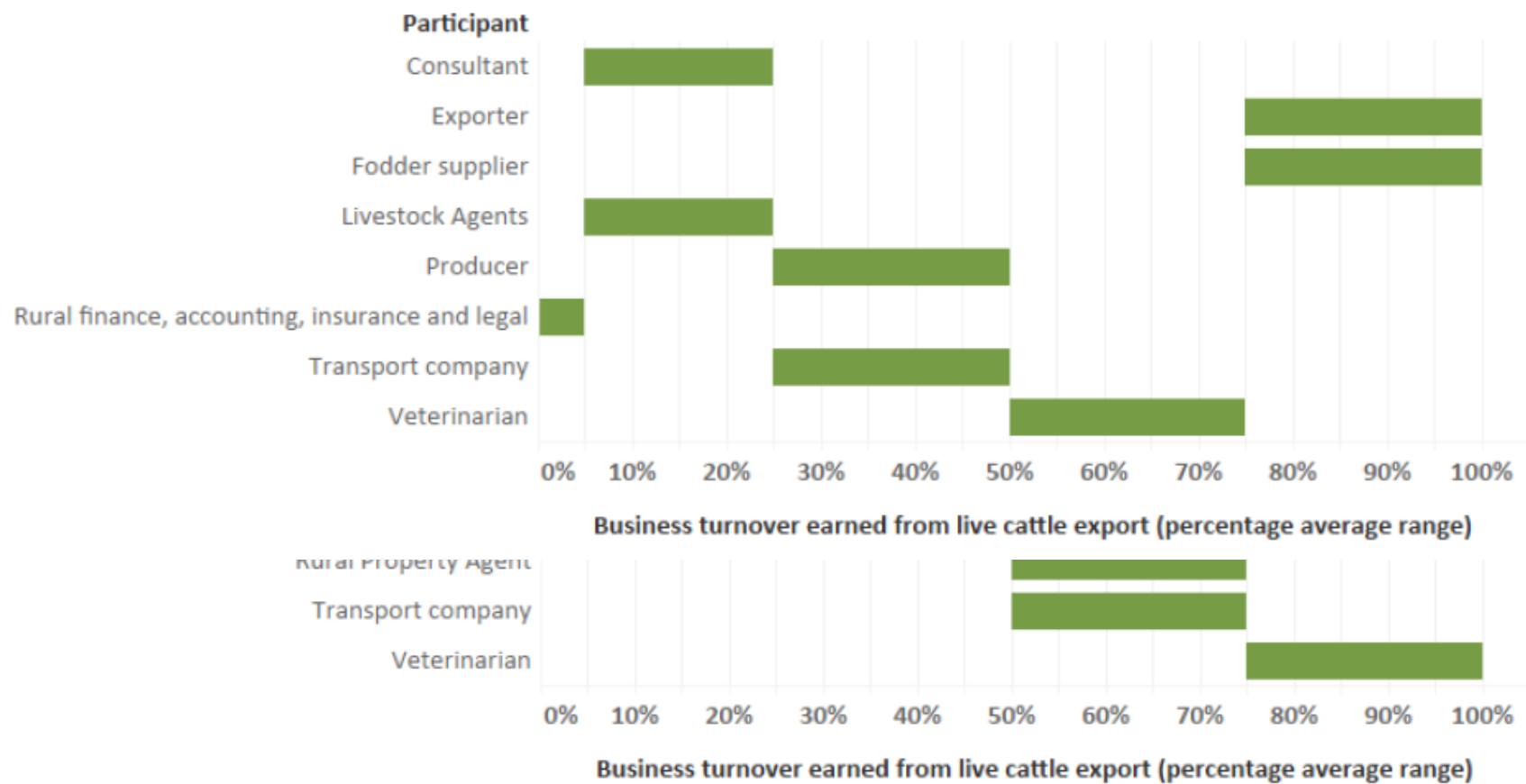


Queensland live export value chain participants by proportion of revenue



# Revenue Reliance - Live Cattle

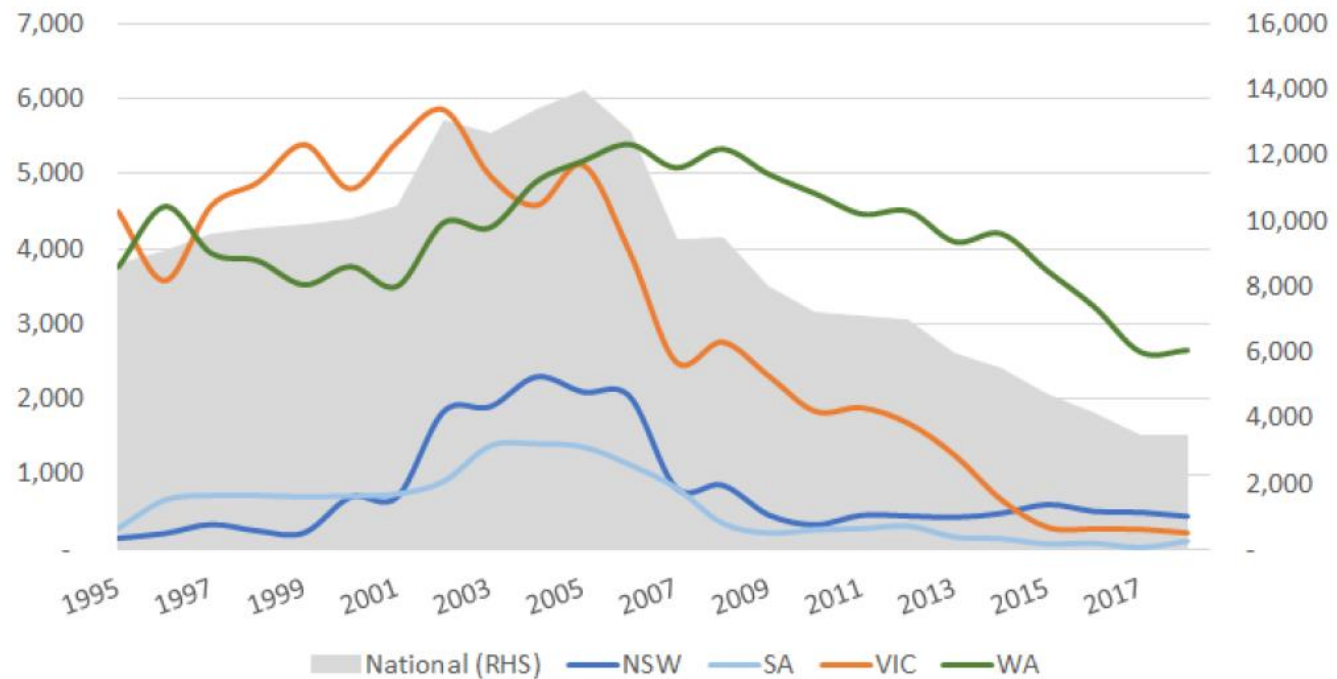
Queensland live cattle export value chain participants reliance on live cattle export indicated as a percentage of business turnover.



# Employment - Live Sheep

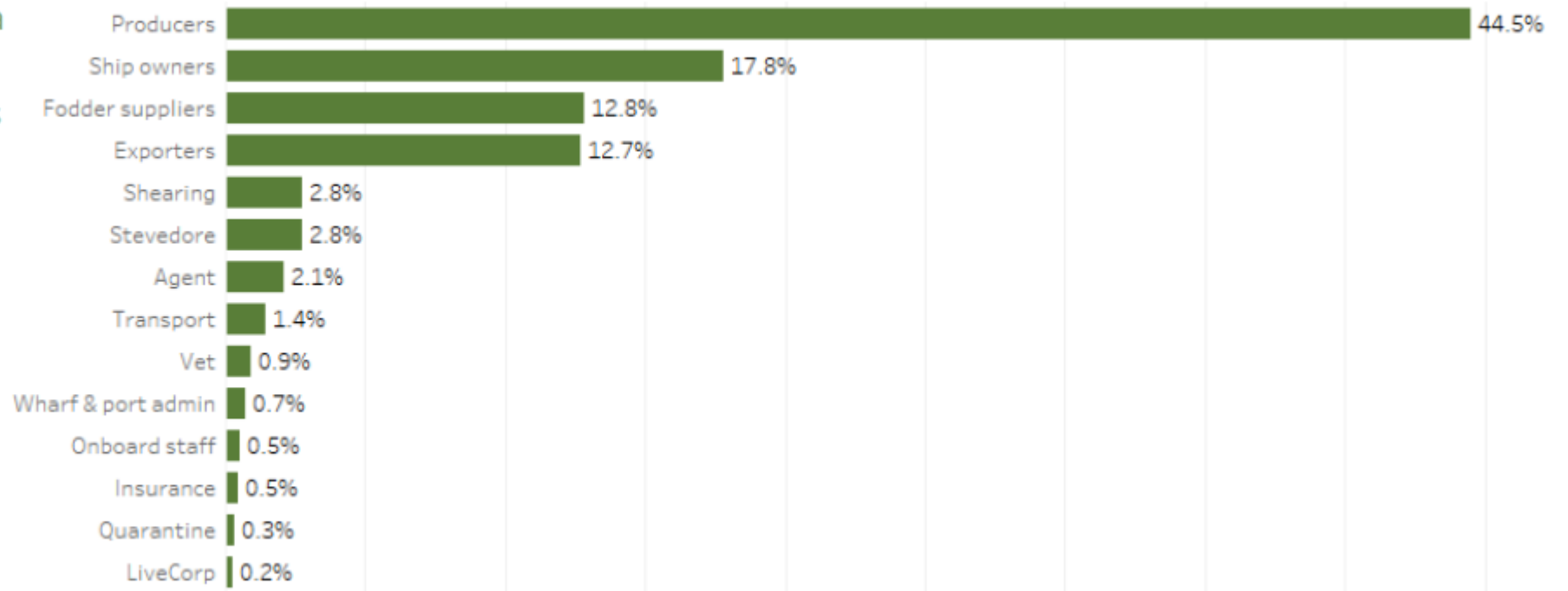
**1,037**  
on farm workers

**3,443**  
total employment



# Value Chain - Live Sheep

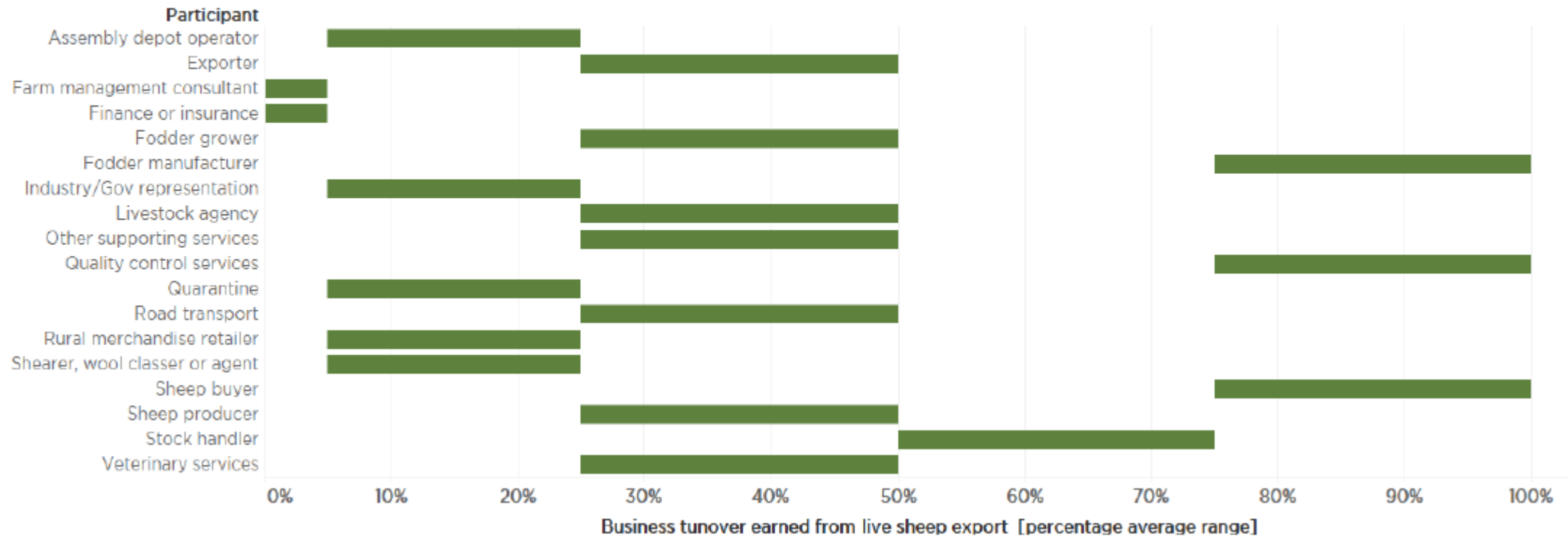
Western Australia  
live export value  
chain participants  
by proportion of  
revenue



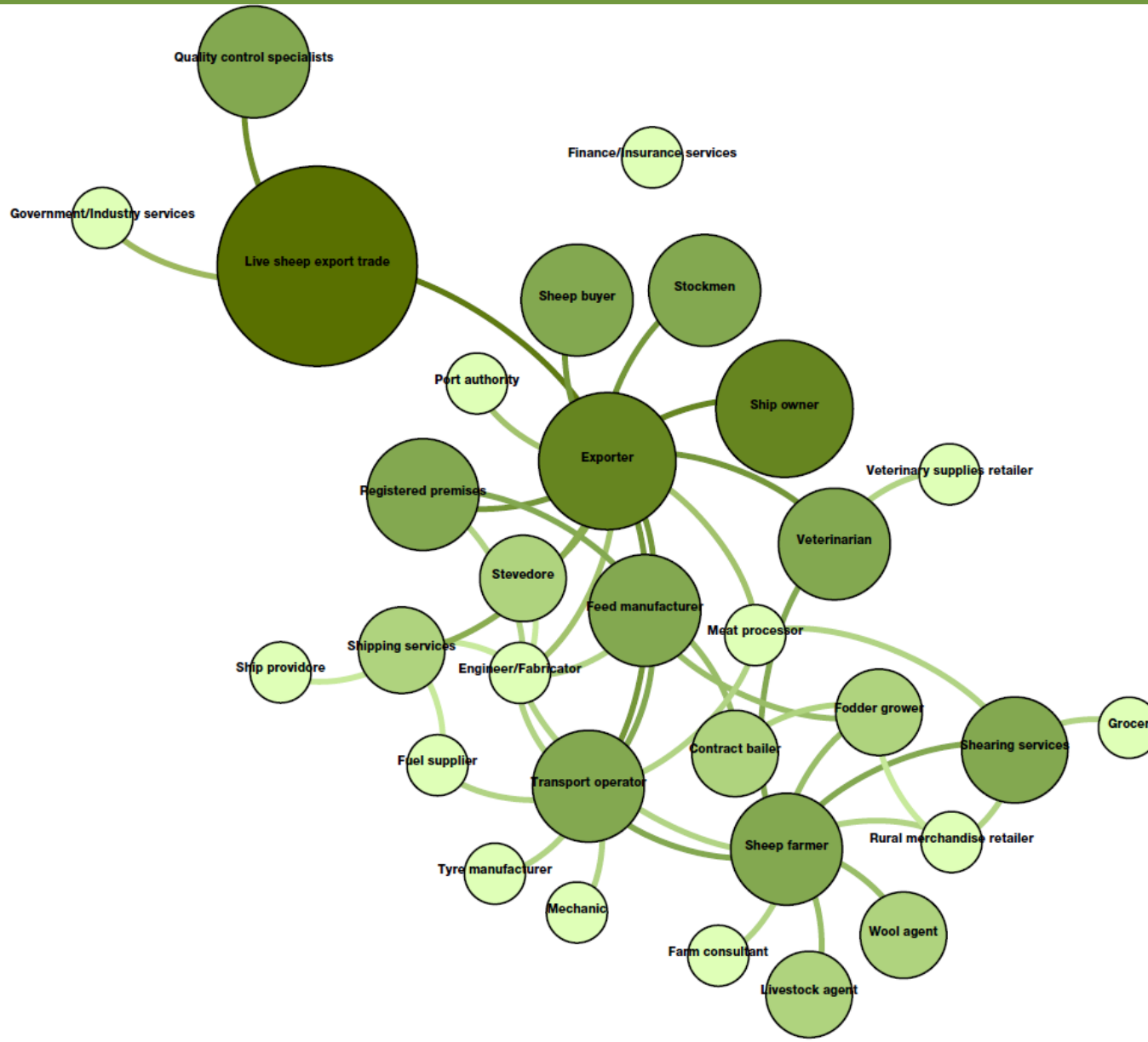


# Revenue Reliance - Live Sheep

Western Australia value chain participants' reliance on live sheep exports indicated as a percentage of business turnover.



# Network Diagram- Live Sheep



# Questions

Subscribe to our podcast



[www.mecardo.com.au](http://www.mecardo.com.au)

[@MecardoAnalysis](https://twitter.com/MecardoAnalysis) 

Contact details

Matt Dalglish

[matt@mecardo.com.au](mailto:matt@mecardo.com.au)

0439 454 557

[@ballarat\\_matt](https://twitter.com/ballarat_matt)

